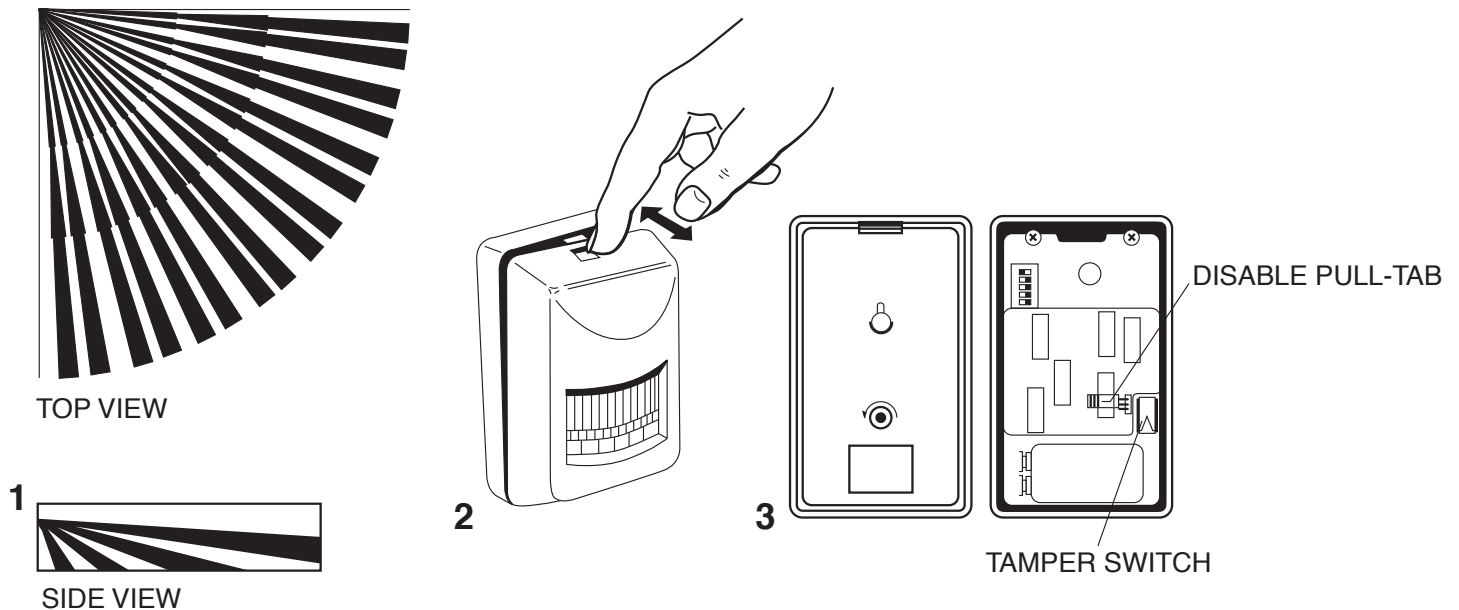


### Tamper Switch

The PIR Sensor has a tamper switch installed on the main circuit board. Whenever the two sections of the case are pulled apart, the switch will open, triggering the sensor.

### Adjustments

All adjustable components on the circuit board are factory-set for proper operation of the sensor, Except where instructed in this instruction sheet, do not change any of the settings on the circuit board, as this may make your sensor fail to operate.



### Installing Your Sensor

The PIR Sensor is designed to detect up to 40 feet away a moving heat source the size of a person. It has a cone of coverage approximately 90 degrees wide, directed straight ahead and downward from the unit (see figure 1). It should be installed to cover likely avenues of approach to and from the entryways of the house. Other possible coverage areas are hallways and areas around valuables. This unit is not recommended for outdoor installation.

1. Open the sensor by depressing the rectangular tab on the top of the casing while pulling the two sections apart.
2. Using the hardware provided with the sensor, attach the back plate of the sensor to the wall.
3. Proceed to the next section.

### Installing the Battery

1. If you have not already done so, open the PIR Sensor.
2. Insert a 9-volt alkaline battery, connecting the negative terminal of the battery to the terminal marked "GND" on the sensor circuit board.
3. Re-attach the two sections of the sensor by snapping the front section onto the back plate.

### Selecting the 15-Minute Disable Period

The PIR is set at the factory for a 15 second disable period. In other words, after the sensor is triggered it is disabled for 15 seconds to conserve battery power by preventing multiple triggering from the same moving heat source. To switch from a 15 second to a 15 minute disable period, follow these instructions. Selecting the 15-minute disable period will considerably increase the expected battery lifespan.

1. If you have not already done so, open the PIR Sensor.
2. Locate the black pull-tab on the circuit board inside the PIR sensor (see the illustration).
3. Pull the tab off the bottom two pins, then push it completely onto the top two pins.
4. Re-attach the two sections of the sensor by snapping the front section onto the back plate.