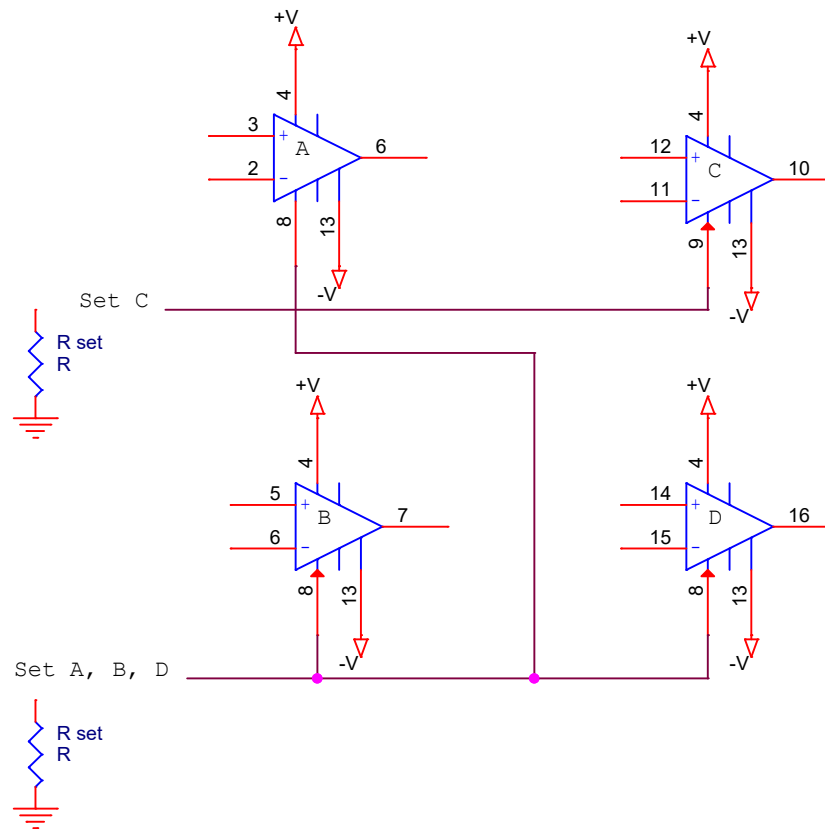


1.2 V to 15 V typical

For +V and -V connect R Set to ground.  
 $I_{Set} = (-V \text{ minus } 0.6 \text{ V}) / R_{Set}$   
 For +V and ground connect R Set to +V.  
 $I_{Set} = (+V \text{ minus } 0.6 \text{ V}) / R_{Set}$

$I_{Set}$  0.1 uA to 50 uA.

$I_{Set}$  inputs are referenced to -V so the resistors can connect to ground or +V.



Programmable features:  
 Gain bandwidth  
 Slew rate  
 Supply current  
 Input bias current  
 Input offset current  
 Input noise

$I_{Set}$	0.1 uA	10 uA	50 uA
Input bias current	1 nA	50 nA	200 nA
Supply current	0.01 mA	1.5 mA	5 mA
Slew rate	0.003 V/us	0.3 V/us	2 V/us
Gain bandwidth	9 KHz	1 MHz	3 MHz
Input offset voltage	0.55 mV	0.5 mV	0.7 mV
Open loop voltage gain	120 dB, 1,000 V/mV		

Title		
LM346N Quad programmable op amp		
Size	Document Number	Rev
A	Design 1761	1
Date:	Sunday, June 13, 2021	Sheet 1 of 1